



Printing capacity at your service

The **Quantum**, a dual-sided plastic card printer, is designed specifically for high-volume badge personalization.

With a total printing capacity of 1000 cards in full color, the **Quantum** is the ideal solution for markets that require volume and capacity: service bureau, access control, time attendance, healthcare, telecommunications...

Thanks to its color sublimation and monochrome thermal transfer technologies, it prints your high resolution texts, logos, photos and bar codes.

It also offers the options of magnetic encoding, smart card encoding and contact-less card personalization.

Printing capacity

Thanks to its 1000 card feeders, hoppers and ribbons, the **Quantum** is the only printer on the market to offer such printing capacity in color. This capacity is even greater in monochrome thanks to a 5000 card black ribbon. The **Quantum** thus enables a large volume of cards to be printed without the presence of an operator.



Versatile and Flexible

Fitted with two feeders and two hoppers completely independent of each other, the **Quantum** is able to generate several printing and/or encoding works on different types of card at the same time.

Thanks to the re-stacker system integrated into the output hoppers, your cards are sorted in the order they are printed. Each output hopper is also fitted with a reject box to automatically remove defective cards.

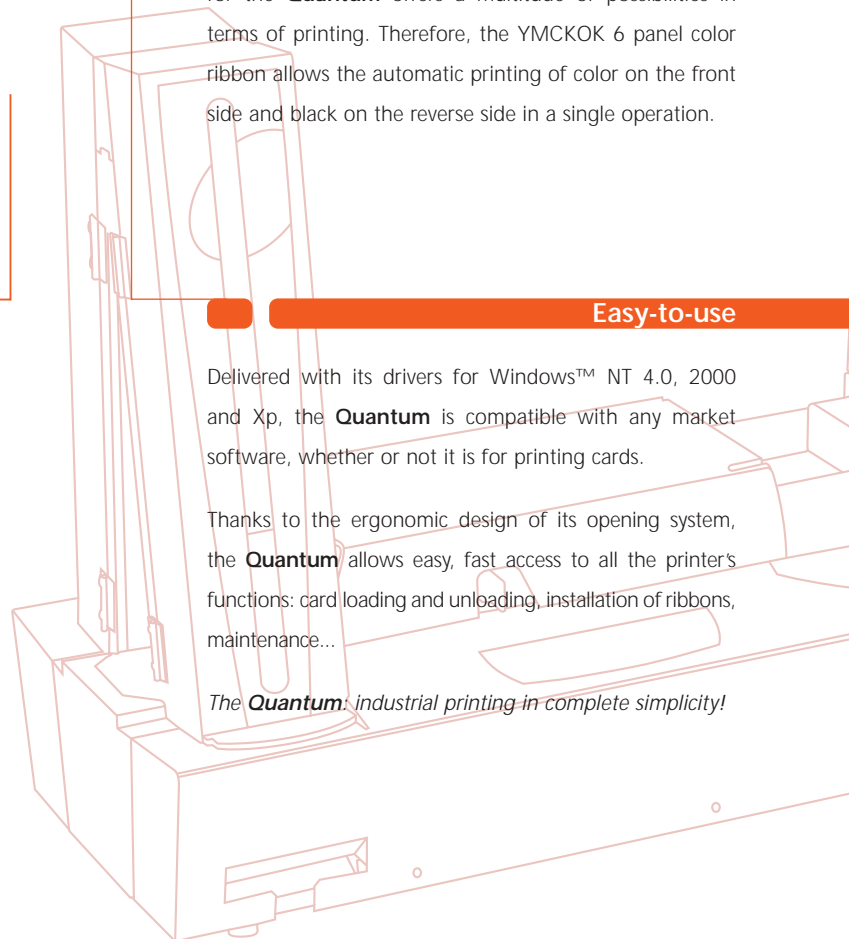
A range of high capacity consumables especially designed for the **Quantum** offers a multitude of possibilities in terms of printing. Therefore, the YMCKOK 6 panel color ribbon allows the automatic printing of color on the front side and black on the reverse side in a single operation.

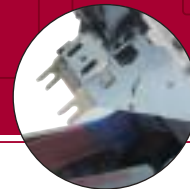
Easy-to-use

Delivered with its drivers for Windows™ NT 4.0, 2000 and Xp, the **Quantum** is compatible with any market software, whether or not it is for printing cards.

Thanks to the ergonomic design of its opening system, the **Quantum** allows easy, fast access to all the printer's functions: card loading and unloading, installation of ribbons, maintenance...

*The **Quantum**: industrial printing in complete simplicity!*





Quantum printer specifications

Printing mode >	<ul style="list-style-type: none"> ■ Color dye sublimation and monochrome thermal transfer ■ Flip-over module ■ Edge-to-edge printing as standard 			
Printer specification >	<ul style="list-style-type: none"> ■ Integrated ribbon saver 			
Printing speed >	<ul style="list-style-type: none"> ■ 140 cards/hour in color (YMCKO), one side ■ 110 cards/hour in color (YMCKOK), two sides ■ Up to 1000 cards/hour in monochrome, one side 			
Print resolution >	<ul style="list-style-type: none"> ■ 300 dpi 			
Windows™ drivers >	<ul style="list-style-type: none"> ■ For Windows™ NT 4.0 / 2000 and Xp 			
Warranty >	<ul style="list-style-type: none"> ■ Printer: 1 year ■ Print head: 1 year or 500 000 passes¹ 			
Ribbon types >	<ul style="list-style-type: none"> ■ Monochrome black ribbon: 5000 cards/roll ■ Other monochrome ribbons available: 1000 cards/roll (available in black, blue, red, green, white, gold, silver and scratch off) ■ 2 panel monochrome ribbon (KO): 500 cards/roll ■ 5 panel color ribbon (YMCKO): 1000 cards/roll ■ 6 panel color ribbon (YMCKOK): 800 cards/roll ■ 1/2 panel color ribbon (YMCKO): 400 cards/roll ■ Hologram ribbon: 350 cards/roll 			
Other printer models >	<table border="1" style="width: 100%; border-collapse: collapse;"> <tr> <td style="width: 33%; padding: 5px;"> <ul style="list-style-type: none"> ■ Quantum MAG Printer with HICO / LOCO magnetic stripe encoder - ISO 7811 </td> <td style="width: 33%; padding: 5px;"> <ul style="list-style-type: none"> ■ Quantum SMART Printer with smart card contact station - ISO 7816-2 </td> <td style="width: 33%; padding: 5px;"> <ul style="list-style-type: none"> ■ Quantum CONTACT-LESS Printer with contact-less smart card reader / encoder (available upon study) </td> </tr> </table>	<ul style="list-style-type: none"> ■ Quantum MAG Printer with HICO / LOCO magnetic stripe encoder - ISO 7811 	<ul style="list-style-type: none"> ■ Quantum SMART Printer with smart card contact station - ISO 7816-2 	<ul style="list-style-type: none"> ■ Quantum CONTACT-LESS Printer with contact-less smart card reader / encoder (available upon study)
<ul style="list-style-type: none"> ■ Quantum MAG Printer with HICO / LOCO magnetic stripe encoder - ISO 7811 	<ul style="list-style-type: none"> ■ Quantum SMART Printer with smart card contact station - ISO 7816-2 	<ul style="list-style-type: none"> ■ Quantum CONTACT-LESS Printer with contact-less smart card reader / encoder (available upon study) 		

1 - Clause governing the use of Evolis consumables

Other specifications

<ul style="list-style-type: none"> ■ Card types: all PVC and Composite PCV cards 	<ul style="list-style-type: none"> ■ Printer weight: 25 Kg (55 lbs)
<ul style="list-style-type: none"> ■ Standard card format: ISO CR-80 (53.98 mm x 85.60 mm - 3.375" x 2.125") 	<ul style="list-style-type: none"> ■ Communication interface: Parallel Centronics and USB (cables supplied)
<ul style="list-style-type: none"> ■ Card thickness: 0.76 mm (30 mil) 	<ul style="list-style-type: none"> ■ Electrical: 110-230 Volts CA, 60-50 Hertz
<ul style="list-style-type: none"> ■ Card feeder capacity: 2 x 500 cards (0.76 mm - 30 mil) 	<ul style="list-style-type: none"> ■ Environmental: - Min / Max operating temperatures: 15°C / 30°C - Humidity: 20% to 65% non-condensing - Min / Max storage temperatures: -5°C to +70°C
<ul style="list-style-type: none"> ■ Card output hopper capacity: 2 x 500 cards (0.76 mm - 30 mil) 	<ul style="list-style-type: none"> - Storage humidity: 20% to 70% non-condensing
<ul style="list-style-type: none"> ■ Card reject box capacity: 2 x 25 cards (0.76 mm - 30 mil) 	<ul style="list-style-type: none"> - Operating ventilation: free air
<ul style="list-style-type: none"> ■ Printer size: - Height: 510 mm (20.07") - Width: 700 mm (27.55") - Depth: 300 mm (11.81") 	



Kimaldi Electronics, S.L.
 Crta de Rubí, 292-B, Pol Ind Can Guítard
 08228 - Terrassa (Barcelona) Spain
 Tel: +34 93 736 1510
 Fax: +34 93 736 1511
www.kimaldi.com - kimaldi@kimaldi.com

