

BioStation 2

Fingerprint IP Access terminal



BioStation 2 incorporates the latest Suprema technology in a beautiful exterior. It combines a new powerful processor. Suprema's next generation optical sensor and improved fingerprint sensing & capturing algorithm to offer unrivaled performance. BioStation 2 provides users with instant authentication and rapid data transfer to manage high volume data with ease. It is ideal for applications that requires versatility without compromise in style and performance.

BioStation 2

Fingerprint IP Access terminal

Features



Instant Matching & Authentication

- Improved matching algorithm, memory handling and powerful processor up to 20,000 matches per second



Rapid Data Transfer

- Optimal data transfer between the server and the device to transfer up to 5,000 user data in under a minute



Expanded Memory Capacity

- 1,000,000 fingerprint template
- 3,000,000 event logs



IP65 Certified Dust & Water Protection

- Ideal for harsh environment and outdoor installation



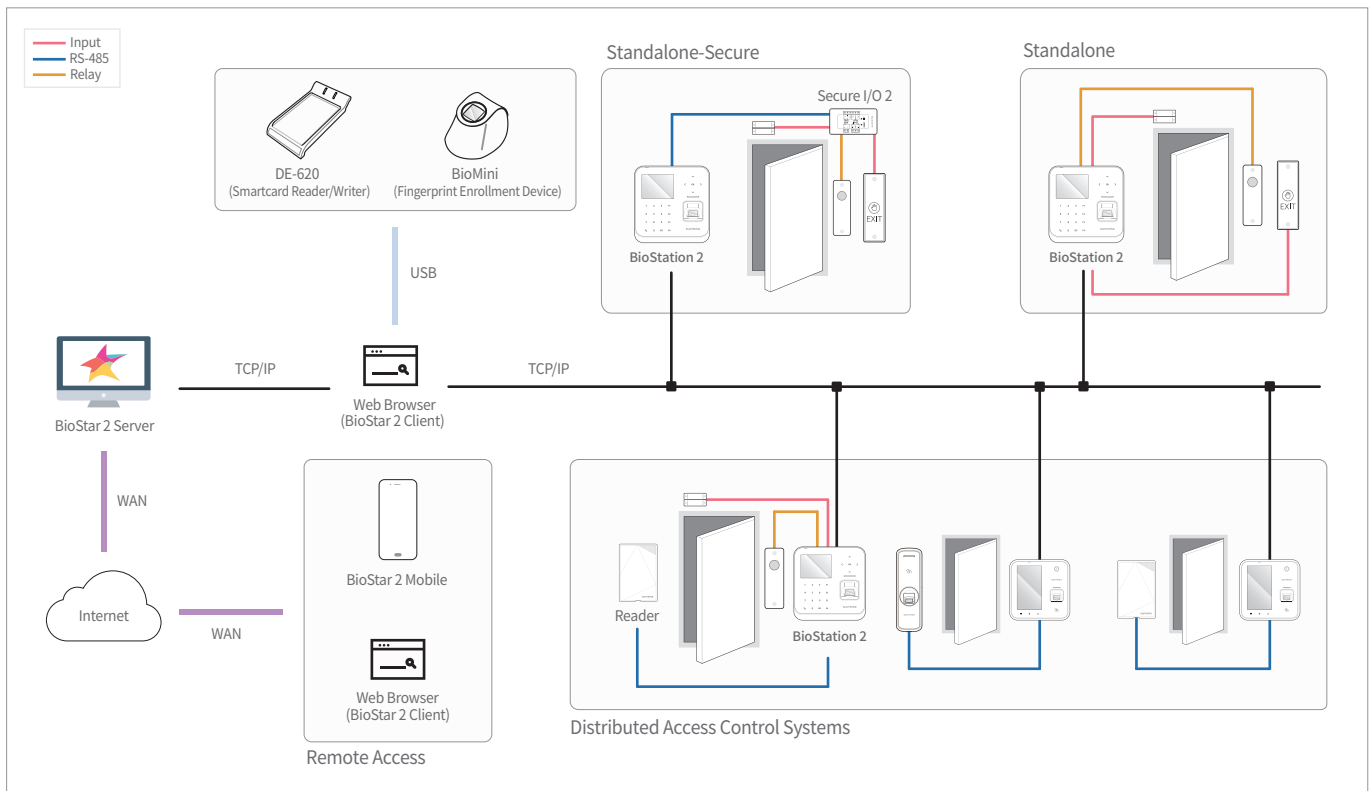
Versatile Interface

- Built-in WiFi and Power-over-Ethernet functionality for wide range of installation options

Specifications

| Biometric | Fingerprint | | | | | | | | |
|------------------------|---|--|--|----------|----------|------------|------------------|--|--|
| Sensor Type | Optical Sensor (OP5) | | | | | | | | |
| Template | SUPREMA / ISO 19794-2 / ANSI 378 | | | | | | | | |
| Extractor / Matcher | MINEX certified and compliant | | | | | | | | |
| LFD | Supported | | | | | | | | |
| RF Option | <table border="1"> <tr> <th>B52-OEPW</th> <th>B52-OHPW</th> <th>B52-OIPW</th> <th>B52-OMPW</th> </tr> <tr> <td>125 KHz EM</td> <td>125 KHz HID Prox</td> <td>13.56MHz MIFARE, MIFARE Plus, DESFire/EV1, FelCa, iCLASS SE/SR, NFC, ISO14443A/B, ISO15693</td> <td>13.56MHz MIFARE, MIFARE Plus, DESFire/EV1, FelCa, NFC, ISO14443A, ISO15693</td> </tr> </table> | B52-OEPW | B52-OHPW | B52-OIPW | B52-OMPW | 125 KHz EM | 125 KHz HID Prox | 13.56MHz MIFARE, MIFARE Plus, DESFire/EV1, FelCa, iCLASS SE/SR, NFC, ISO14443A/B, ISO15693 | 13.56MHz MIFARE, MIFARE Plus, DESFire/EV1, FelCa, NFC, ISO14443A, ISO15693 |
| B52-OEPW | B52-OHPW | B52-OIPW | B52-OMPW | | | | | | |
| 125 KHz EM | 125 KHz HID Prox | 13.56MHz MIFARE, MIFARE Plus, DESFire/EV1, FelCa, iCLASS SE/SR, NFC, ISO14443A/B, ISO15693 | 13.56MHz MIFARE, MIFARE Plus, DESFire/EV1, FelCa, NFC, ISO14443A, ISO15693 | | | | | | |
| CPU | 1.0 GHz Single Core | | | | | | | | |
| Memory | 8GB Flash + 256MB RAM | | | | | | | | |
| Max. User | 500,000 (1:1), 20,000(1:N) | | | | | | | | |
| Max. Template | 1,000,000(1:1), 40,000(1:N) | | | | | | | | |
| Max. Logs | 3,000,000(text) | | | | | | | | |
| LED | Multi-Color | | | | | | | | |
| Sound | 16-bit Hi-Fi | | | | | | | | |
| Ethernet | Supported (10/100 Mbps, auto MDIX) | | | | | | | | |
| RS-485 | 1ch Host or Slave (Selectable), OSDP V2.1.6 | | | | | | | | |
| Wiegand | 1ch Input, 1ch Output | | | | | | | | |
| TTL | 2ch Inputs, 2ch Outputs | | | | | | | | |
| Relay | 1 Relay | | | | | | | | |
| PoE | Supported (IEEE 802.3af compliant) | | | | | | | | |
| Tamper | Supported | | | | | | | | |
| Power | Voltage: DC 12V Current: Max. 1A | | | | | | | | |
| Operating Temperature | -20°C ~ 50°C | | | | | | | | |
| Operating Humidity | 0% ~ 80%, non-condensing | | | | | | | | |
| Dimensions (WxHxD, mm) | 142 x 145 x 45 mm | | | | | | | | |
| Unit Weight | 440g | | | | | | | | |
| Certificates | CE, FCC, KC, RoHS, REACH, WEEE | | | | | | | | |

System Configurations



Suprema Inc.

17F Parkview Tower, 248, Jeongjail-ro, Bundang-gu, Seongnam-si, Gyeonggi-do, 13554, Rep. of KOREA

Tel: +82 31 783 4502 | Fax: +82 31 783 4503 | Inquiry: sales@supremainc.com | www.supremainc.com

©2018 Suprema Inc. Suprema and identifying product names and numbers herein are registered trademarks of Suprema, Inc. All non-Suprema brands and product names are trademarks or registered trademarks of their respective companies. Product appearance, build status and/or specifications are subject to change without notice.

[AHL-BS2-180111-03-EN]

Suprema
BIOMETRICS & SECURITY