

CX-330

RE-TRANSFER CARD PRINTER



Advanced Network & Security Features

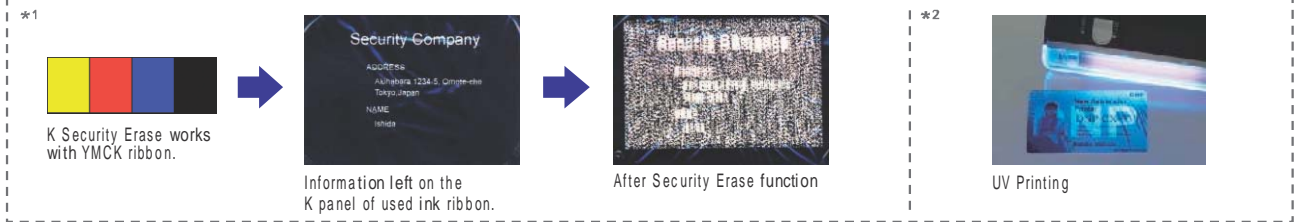
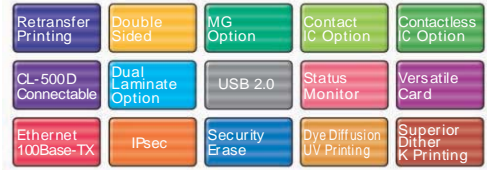


CX-330

DNP CX-330 Re-transfer card printer

Innovative Features

- Dual Interface of High Speed USB 2.0 & Ethernet (100Base-TX or 10base-T)
- IPSec Protocol (IPv4) is equipped.
- Security Erase Function for K panel *1
- Dye Diffusion UV Printing *2
- Extended Modular Options

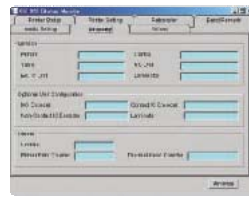


Continuing features of DNP Re-Transfer Printer

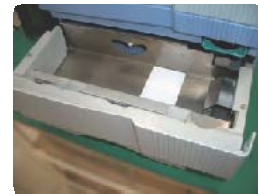
- Perfect Edge to Edge printing
- Glossy Photo Finish Quality
- Ideal for Contact chip and RFID (Contactless) desktop personalization
- Printhead free from damage by card
- Support various encode/print/laminate needs
- 1 year of warranty



Re-Transfer printing process



SMP



Card Hopper



CX211CSD



CF-AT10



CX-330 Re-transfer card printer



CL-500D

● Specification

Printing Method	Dye Sublimation/Resin Thermal Re-transfer
Resolution	300 dpi
Printable Area	Full-Bleed
Print Speed	29 seconds/card (YMCK with transfer)
Dual Interface	High Speed USB2.0 & Ethernet (100Base-TX, 10Base-T)
Dimension	W343 x H381 x D347mm
Weight	22kg
Signal Level	256 levels per color (YMC) 2 levels (Bk)
Hopper Capacity	300 cards (0.76mm thickness)
Stocker Capacity	100 cards (0.76mm thickness)
Ink ribbon	YMCK set (1,000 cards(single side)), YMCKK set (1,500 cards(4c x 1c)), YMCKUV roll (750 cards)
Options	Magnetic Stripe Encoding / IC Encoding / Contactless Encoding Lamination unit (CL-500D & CF-AT10)
Safety Standard	UL, VCCI-B, FCC Class B, EN Class B, RoHS, CCC

*Due to policy of continuous development, we reserve the right to alter details of specification and equipment without notice.