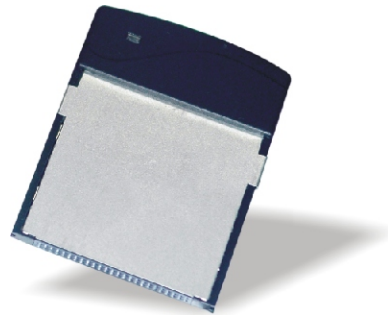
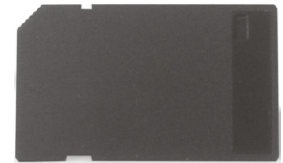


RFID card reader



Code: 55SYRD245-CF-1



Code:55SYRD245-SD-1

SYSTEM

Communicate 2.45 GHz

Frequency 2.40~2.48 GHz

Channel 255

Address 65536

RSSI 0-255

LQI 0-255

PROGRAM Set Parameter

LED Reader action or R/W status

Interface CF Type 1 / SD IO

Read range 16M

System PDA Pocket PC 2003.

POWER

Action current MAX 50 mA @ 3.3 VDC

ENVIRONMENT

Operating TEMP. -20°C to 65°C, 5 to 95%RH

Storage TEMP. -30°C to 85°C, 5 to 95%RH

DIMENSIONS

Dimensions (CF) 42.7W x 55.3H x 6.24D (mm)

Dimensions (SD) 40.5W x 23.9H x 2.35D (mm)

Compatible with the Interface of CF/SD card
Multi-tag (anti-collision) capability
Inserted into PDA or notebook as handheld
or portable readers
LED indicator



www.kimaldi.com