

# Flexy

Software Controlled  
IP Device



Access Control



IP Based



RFID



IP65



Fingerprint

# Available finishes

## Wall mounted



- Modern and minimalist design
- Waterproof
- High-impact polycarbonate front cover
- ABS back cover
- Easy installation: junction box not required
- Dimensions: 

Flexy RF	76x121x51 mm
Flexy Bio	76x181x52 mm

### Recommended for:

Access control for businesses, hotels, hospitals, datacentres, etc.



## Flush-mounted



- Flush-mounted biometric and/or RFID reader for gates, turnstiles, kiosks
- Easy to connect using the terminal block and RJ45 PCB connector
- High-impact polycarbonate front cover
- Dimensions: 

Kit OEM RF	76x121x27 mm
Kit OEM Bio	76x181x41 mm

### Recommended for:

Access control for sports centres, integration in kiosks and turnstiles, prepay RFID solutions, etc.



## OEM Embedded Module



- Compact design: reader, antenna and controller in the same board
- Easy to connect using the terminal block and RJ45 PCB connector
- Possibility of connecting additional readers, I/O boards
- Easy-to-integrate into software applications
- Dimensions: 

Board	65x77x19 mm
PoE Board	65x84x19 mm

### Recommended for:



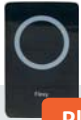

Access control for sports centres, utility management solutions, etc.



# Why choose Flexy?

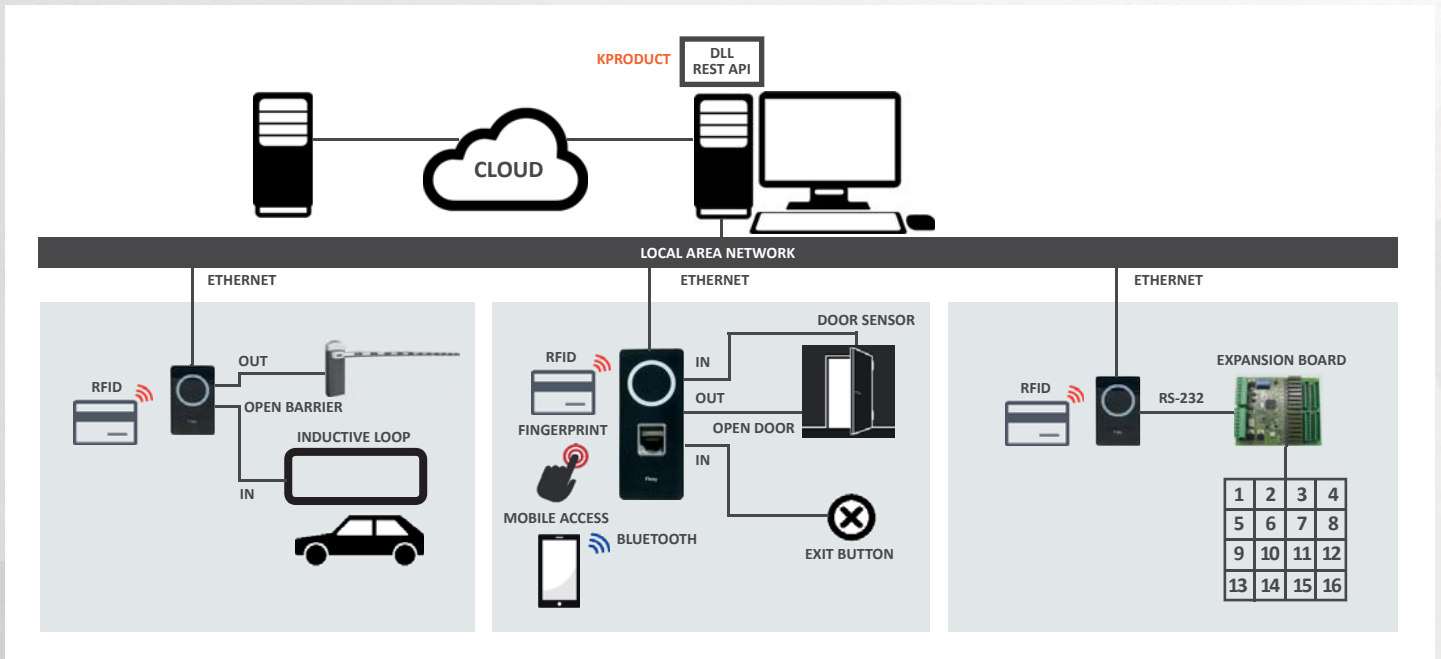
- 1 100% software controlled**  
 The host controls all inputs and outputs in real time including LED and Buzzer.
- 2 Multiple factor authentication**  
 Combine Fingerprint, Multi-ISO RFID, Bluetooth Low Energy BLE. Storage on Card.
- 3 Implement your own AC algorithm**  
 Allows the administrator to set diverse, complex and simultaneous criteria to grant or deny users access.
- 4 Compact hardware**  
 Antenna, reader and controller in a single board with Ethernet & Serial connectivity.
- 5 Auxiliary readers & I/O boards**  
 Easy integration with virtually any reader and RS-232 expansion board.
- 6 Customisation option**  
 Possibility of adapting firmware and housing to client requirements.

## Specifications

	 Flexy RF	 Flexy Bio	 Plus Flexy Plus RF	 Plus Flexy Plus Bio
<b>Main</b>				
Fingerprint sensor	-	Optical (Scratch resistant)	-	Optical (Scratch resistant)
Cards & Protocols High Frequency	MIFARE Classic 1K / 4K, Ultra Light, Ultra Light C, Plus, MIFARE DESFire 0.6, MIFARE DESFire EV1, DESFire EV1 SE, ISO 14443A/B		iCLASS, iCLASS SE/SR, iCLASS Seos, MIFARE Classic 1K / 4K, Ultra Light, Ultra Light C, Plus, MIFARE DESFire 0.6, MIFARE DESFire EV1, MIFARE SE, DESFire EV1 SE, T=CL, ISO 14443A, ISO14443B CSN, FelICa, SmartMX, ISO 15693	
Cards & Protocols Low Frequency	-		HID Prox, Indala Prox, EM Prox, AWID Prox	
Bluetooth	-		Low Energy (BLE)	
Capacity 1:1	Unlimited			
Capacity 1:N	5000 - unlimited*			
<b>Host interface</b>				
Ethernet	Ethernet 10 Base-T			
RS-232	Yes			
<b>Interfaces</b>				
Digital Inputs	2 active to ground digital inputs, inactive in open circuit			
Wiegand/TTL Input	Wiegand 26, 34 and variable length or Clock&Data, ABA Track-2			
RS-232	2	1	2	1
Relay	1 relay contact, potential-free, 24V/1A (N.C.) (24/1A: 500,000 cycles)			
Buzzer	PCB Integrated			
LED	RGB			
<b>General</b>				
Operating Temperature	-20°C - 60°C			
Power	5 VDC +/-10%			
PoE	Optional (IEEE802.3af)			
<b>Software tools</b>				
Protocol	KXP over serial RS-232 and KXP over Ethernet UDP			
Tools	.Net DLL and REST API SERVER			

\*depending on local or host identification

# Flexy Network Diagram



## Experts in identification

Kimaldi manufactures and distributes high-quality hardware for identification since 1998. The company's main areas of expertise are biometric technologies, RFID and OEM products.

Throughout its history Kimaldi has always focused on R&D to produce cutting edge devices using the latest ID technologies.

We have a broad experience in customizing our standard products or developing them from scratch to satisfy customer's needs.



### Kimaldi Electronics, S.L.

Ctra. de Rubí, 292 B  
Pol. Ind. Can Guitard  
08228 Terrassa  
Barcelona, Spain

Tel. +34 93 736 15 10  
kimaldi@kimaldi.com

### Kimaldi Lusa

EN 247, KM 64,5. Park Charal,  
Armazém 4 - Carne Assada  
2705-837 Terrugem  
Portugal

Tel. +351 21 715 63 03  
portugal@kimaldi.com