



# HID® Lumidigm® Software Developer Kit 8

HID patented MSI works on the most difficult finger types



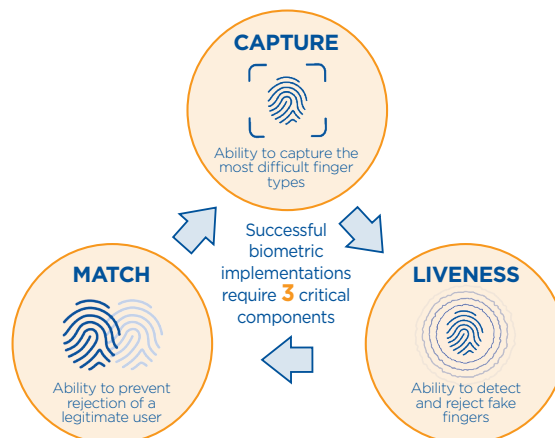
HID MSI ensures users have a fast, single-touch experience and authorized users are not falsely rejected

## ENSURING PEOPLE ARE WHO THEY CLAIM TO BE

The HID Lumidigm Software developer Kit (SDK) is a collection of application programming interfaces (APIs), documentation and code samples that allows developers to quickly create applications that integrate fingerprint biometrics and HID patented Multispectral Imaging (MSI) to ensure someone isn't fraudulently using another person's identity.

SDK 8 is perfect for adding fingerprint biometrics to citizen ID, voting, government benefits disbursement, ATM, self-service kiosk, time and attendance, physical access control, single sign-on, point of sale, drug dispensing, employee authentication and know-your-customer applications.

- **Reduce Financial Losses** — HID patented MSI technology, the market-leading liveness detection, accurately and consistently identifies and rejects fake finger attempts. HID MSI fingerprint readers are verified compliant with the ISO global standard for biometric Presentation Attack Detection.
- **Deliver a Superior User Experience** — Patented MSI technology ensures every user, no matter the quality of their fingerprint (extra dry, wet, oily, dirty, aged or damaged), is properly enrolled and quickly matched. This reduces false rejections for faster user throughput and increased user satisfaction.
- **Protect User Privacy** — Use SDK 8 to build a privacy preserving biometric solution. Encrypt on host fingerprint template databases to preserve the user's privacy and comply with local privacy legislation (GDPR).












HID patented MSI technology delivers market leading Capture, Liveness and Match functionality. Ensuring a successful biometric implementation and superior user experience.

## SPECIFICATIONS

SDK PART NUMBER	OPERATING SYSTEM	PROGRAMMING INTERFACE	DEVELOPMENT ENVIRNOMENTS
<b>BIO-SDK 8-FNGRLD-WIN</b>	Windows 7, 8.1 and 10 32-bit & 64-bit Systems	"C", JAVA, C#	Visual Studio 2005-2019/Netbeans
<b>BIO-SDK 8-FNGRLD-LNX86</b>	Linux PC 32-bit Systems	C/C++	VS Code/CMake/GNU
<b>BIO-SDK 8-FNGRLD-LNX64</b>	Linux PC 64-bit Systems	C/C++	VS Code/CMake/GNU
<b>BIO-SDK 8-FNGRLD-LNXARMV7</b>	Linux Embedded ARMV7 32-bit Architecture	C/C++	VS Code/CMake/GNU
<b>BIO-SDK 8-FNGRLD-LNXARMV8</b>	Linux Embedded ARMV8 64-bit Architecture	C/C++	VS Code/CMake/GNU

## SDK 8 SUPPORTED HID LUMIDIGM FINGERPRINT READERS

PART NUMBER	DESCRIPTION
 <b>M210-00-01</b>	Single Finger Biometric Reader, MSI Technology, OEM Sensor, match on host 1:1 and 1:N
 <b>M211-00-01</b>	Single Finger Biometric Reader, MSI Technology, USB Desktop Reader, match on host 1:1 and 1:N
 <b>M320-00-10</b>	Single Finger Biometric Reader, MSI Technology, OEM Module, match on device 1:1 and 1:N
 <b>M321-00-10</b>	Single Finger Biometric Reader, MSI Technology, USB Desktop Reader, match on device 1:1 and 1:N
 <b>V300-40-01</b>	Single Finger Biometric Reader, MSI Technology, OEM Module, match on device 1:1
 <b>V302-40-01</b>	Single Finger Biometric Reader, MSI Technology, USB Desktop Reader, match on device 1:1
 <b>V310-00-01</b>	Single Finger Biometric Reader, MSI Technology, OEM Sensor, match on host 1:1 and 1:N
 <b>V311-00-01</b>	Single Finger Biometric Reader, MSI Technology, USB Desktop Reader, match on host 1:1 and 1:N
 <b>V371-00-01</b>	Single Finger Biometric Reader, MSI Technology, USB Desktop Reader, match on host 1:1 and 1:N with integrated RF contactless card reader

