

Suprema Product Overview

2023



suprema
SECURITY & BIOMETRICS

Contents

BioStar 2
Access Control

Biometrics

Mobile

RFID
Reader

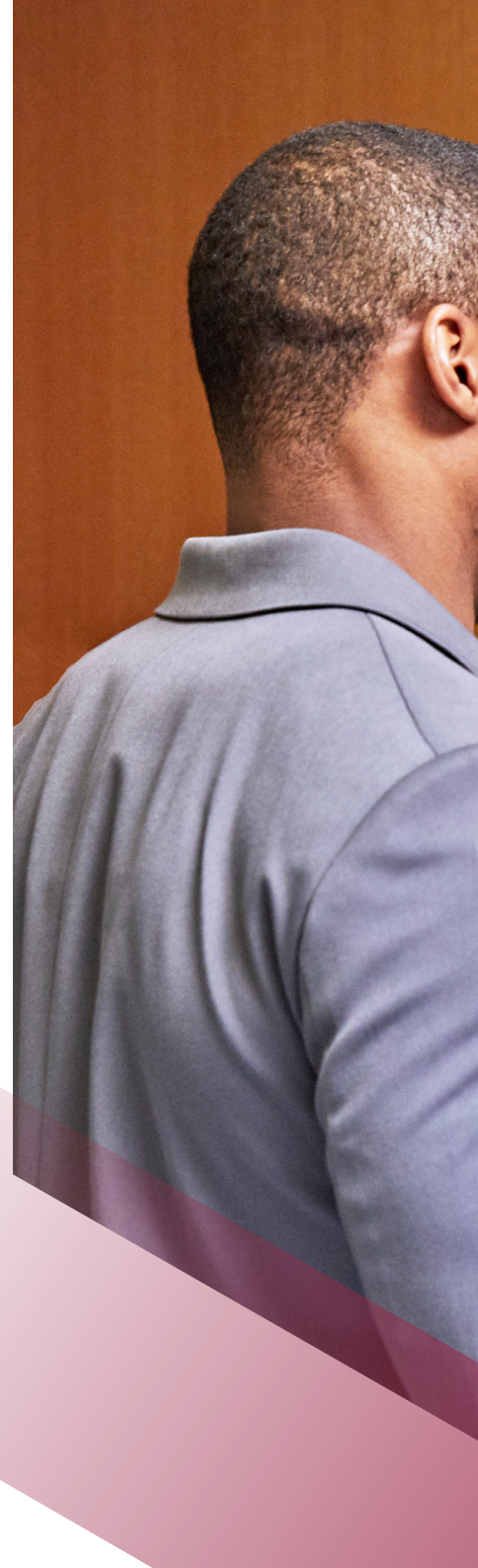
Controller

Contactless
Solution

System
Topology

Development
Tools

Product
Data Sheet





Proven Leader in Access Control, Time & Attendance and Biometric Solutions





Founded in 2000, Suprema Inc. has become a leading global provider of security and biometrics. By combining world-renowned biometric algorithms with superior engineering, Suprema has introduced a number of technology innovations to the security industry over the last two decades.

Suprema's extensive portfolio includes biometric access control systems, time & attendance solutions, fingerprint live scanners, mobile authentication solutions and embedded fingerprint modules.

The company has established itself as a global premium brand in the physical security industry and has worldwide sales network in over 140 countries. Suprema has no. 1 market share in biometric access control in Europe, Middle East and Africa region and has been named the world's top 50 security manufacturers for twelve consecutive years.



Year Established

2000



Security Manufacturer

Top 50

(A&S Magazine, 2011-2022,
12 years in a row)



EMEA Market Share

No.1

in Biometric Access Control
(IHS Markit)



Number of people using
Suprema technologies

1 Billion +



Systems
in Operation

1.5 Million +

(worldwide installations)



Global Sales
Network in

140 Countries



National Identification
Projects in

23 Countries



Industry Patents and
Intellectual Properties

100+



Excellent Financial
Stability

A+

(Korea Investors Service)



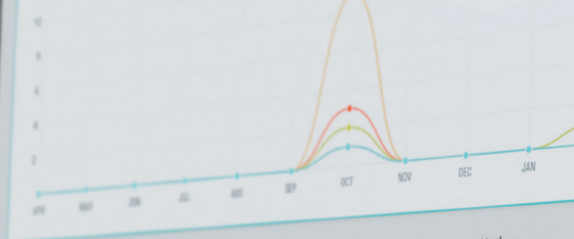


Dashboard 2

Dashboard

Overview

April 2022 - March 2023



Notice

What's new with

Usage

Icon	Label	Value
User	User	100
Registered User	Registered User	100
Mail	Mail	100
Card	Card	100
Device	Device	100/1000
Door	Door	100/1000
Zone	Zone	100/1000
Access Group	Access Group	100

Mixed Alarm

Time	Device	User
2022-10-10 10:10:10	Ventilation 3	
2022-10-10 10:10:10	Ventilation 12	



BioStar 2 Access Control

BioStar 2 is a web-based, open, and integrated security platform that provides comprehensive functionality for access control, time & attendance, visitor management, and video logs. It supports web API to integrate BioStar 2 with 3rd party software. In addition, users can control the BioStar 2 platform remotely with the mobile app for BioStar 2 and manage Suprema Mobile Access, a mobile credential system that uses smartphones as access keys.



BioStar 2 Time & Attendance

Build a more flexible time & attendance system with BioStar 2 TA module. It lets you set an unlimited number of schedules and specify the number of users for each schedule. BioStar 2 time & attendance module is ideal for an enterprise level system or create a variety of time & attendance rules.



Various Shift
Settings



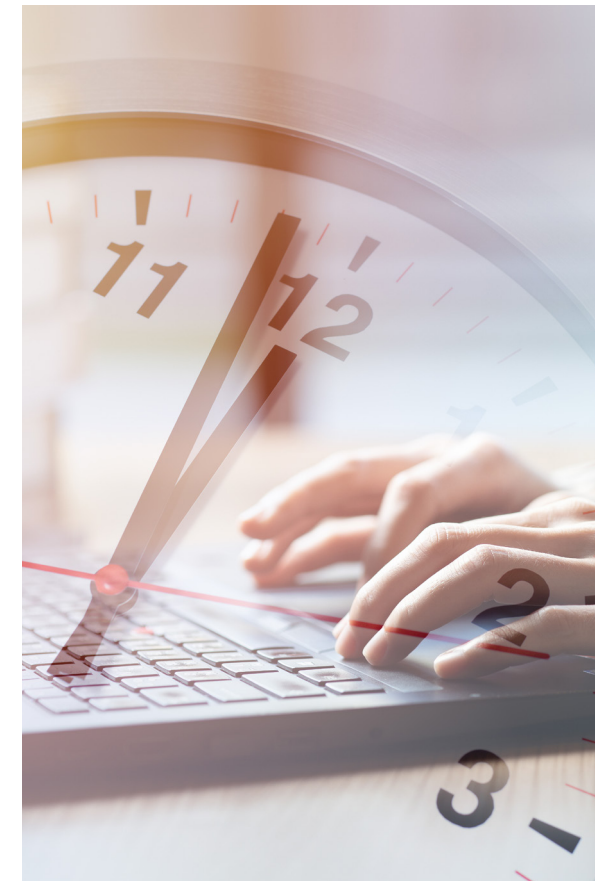
Flexible Work
Management



Easy Shift Type
Setting



Timesheet
Calendar View



BioStar 2 Access Control

With the purchase of BioStar 2 AC license, you can use advanced access control features like elevator control, advanced anti-passback zone control, fire alarm zone, scheduled lock/unlock zone, intrusion alarm zone, server matching, and video log features.



Customized
System
Architecture



Elevator
Control



Improved Zone
Management



Server
Matching



Video
Logs

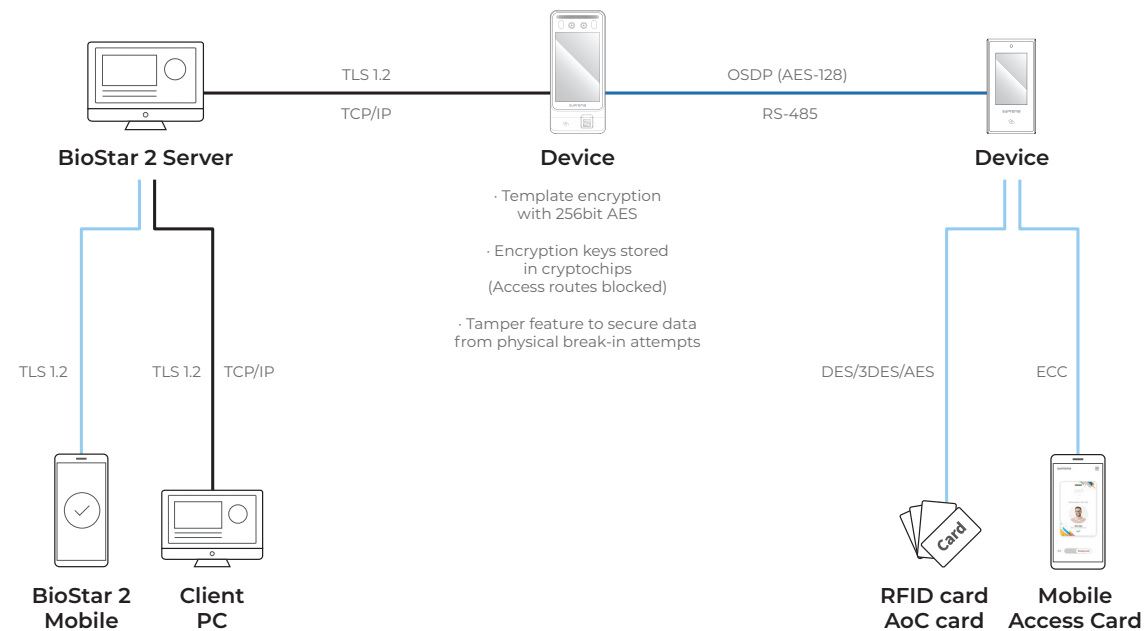


Visitor
Management

BioStar 2, Certified for Data Protection

Suprema BioStar 2 platform and access control devices are certified by ISO for data protection measures and are GDPR and CCPA compliant, meeting all of 26 data protection management standards, 114 data protection control and 18 personal information management requirements.

All personal information stored in Suprema products, including biometric data, are encrypted using AES algorithm and the encryption keys are safely managed in cryptochips(SecureElement), with access routes securely blocked.



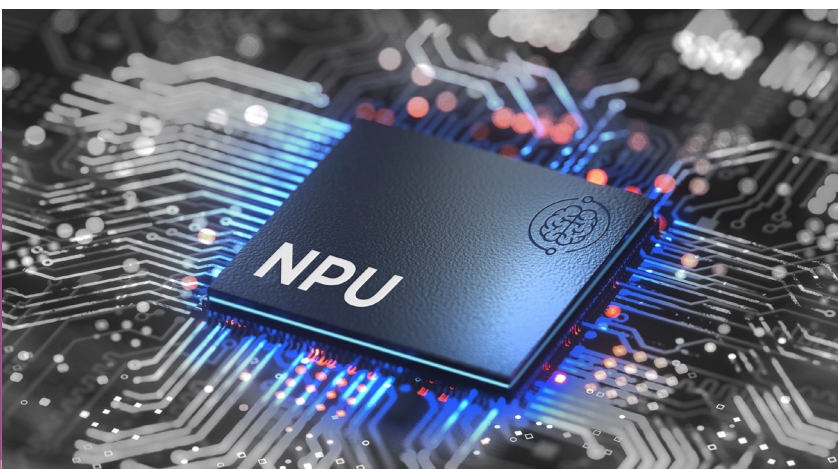


Biometrics

Leading provider of biometric solutions since 2000, Suprema has continuously innovated fingerprint and facial recognition technology as well as deep learning artificial intelligence that is core to biometric solutions.

Artificial Intelligence

Artificial intelligence is core to biometric recognition technology. Leading provider of biometrics solutions for twenty years, Suprema has naturally advanced its computer vision with machine learning technology as well. Facing and solving real-world problems over the two decades, Suprema has accumulated technological know-how that late comers into the field have not acquired. Because Suprema designs, develops and manufactures the entire product—from algorithm and software to hardware as well—the company possesses technological capability that can optimize and expand upon AI for platforms ranging from the cloud to embedded systems.

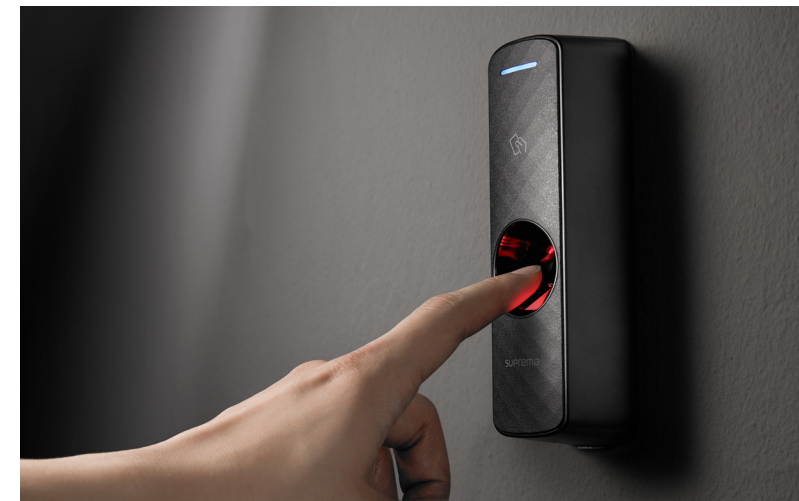


Facial Recognition

Suprema took its facial recognition technology to the next level. BioStation 3 adopted NPU, or Neural Processing Unit, to maximize the performance of its AI engine. Combined with Suprema's domain knowledge and experience as a two-decade access control leader, BioStation 3's NPU-optimized AI algorithm offers the highest standards in facial recognition accuracy and speed.

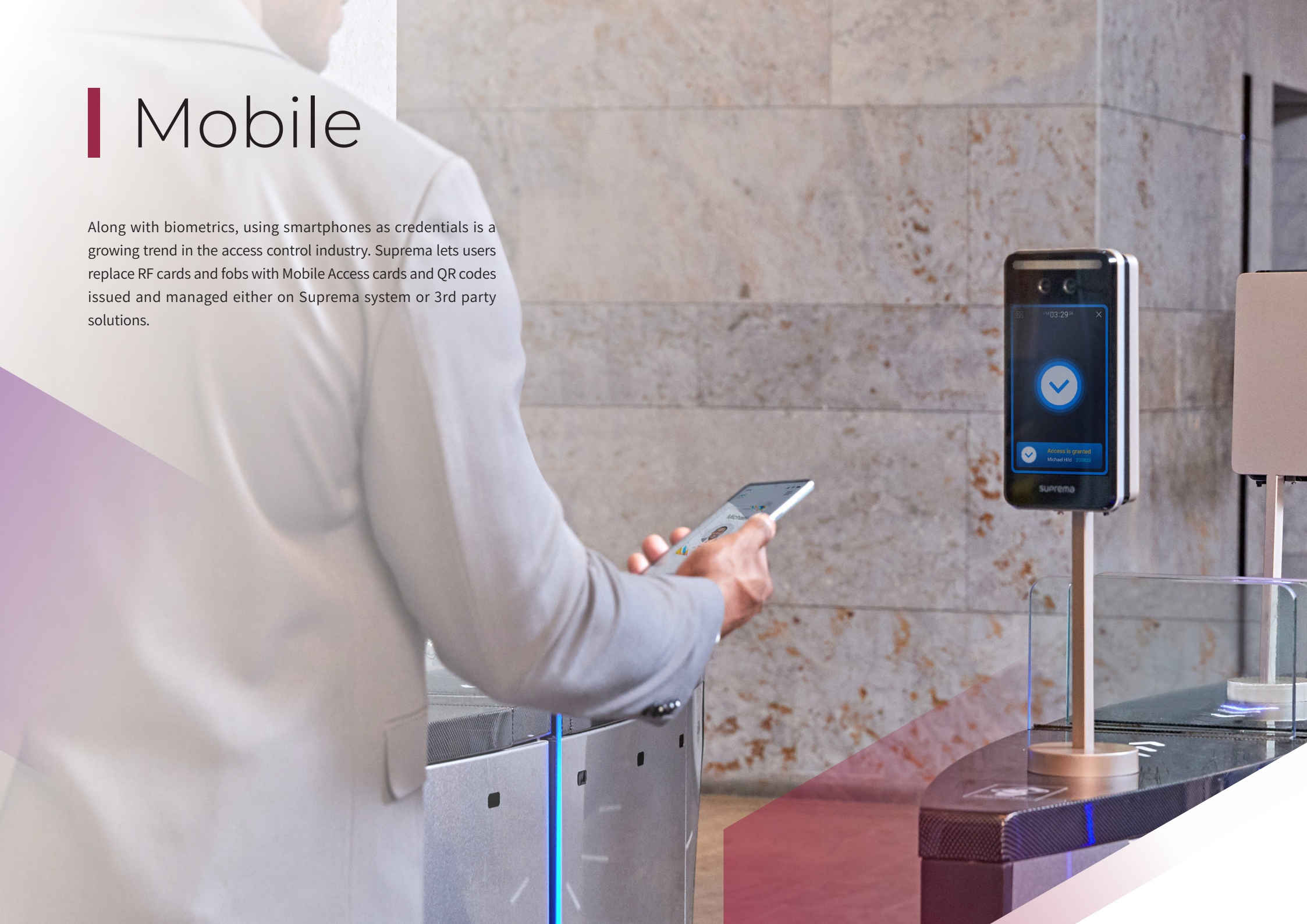
Fingerprint Recognition

Suprema's fingerprint recognition technology is the world's fastest, most accurate and stable with the false acceptance rate of only rate of 1 in 10 million, matching up to 150,000 people per second. Suprema employs a unique sensor imaging technology that reduces image distortion and uniformly corrects the contrast to enhance authentication performance. Suprema technology identifies fake fingerprints forged with various materials like paper, film, rubber, clay, silicone, and adhesives by comparing irregular fingerprint patterns as well as fingerprint images obtained via infrared and white light. Suprema fingerprint recognition received international certifications (NIST MINEX, FBI, IQS, STQC, FVC) and is suitable for governmental and official authentication purposes.



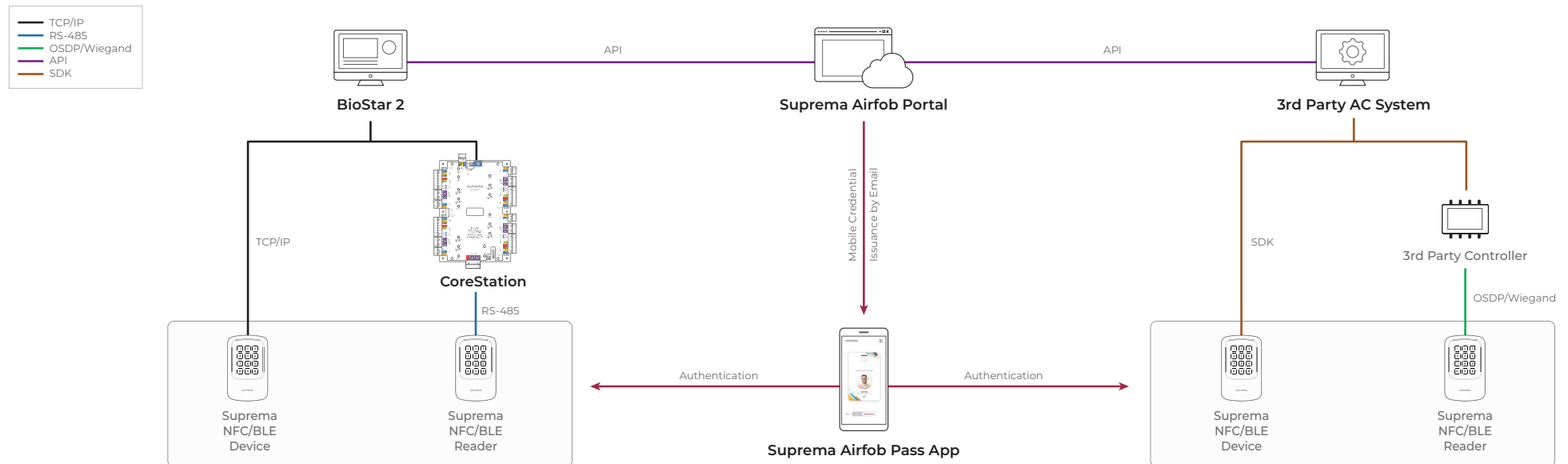
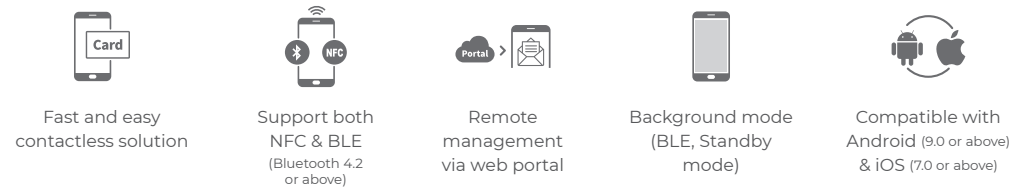
Mobile

Along with biometrics, using smartphones as credentials is a growing trend in the access control industry. Suprema lets users replace RF cards and fobs with Mobile Access cards and QR codes issued and managed either on Suprema system or 3rd party solutions.



Suprema Mobile Access

Suprema Mobile Access significantly improves user convenience by letting people use smartphones as access cards. Mobile access cards can be issued on either BioStar 2 or Suprema Airfob Portal and users can receive them via email. Suprema Mobile Access can easily be integrated with 3rd party systems.



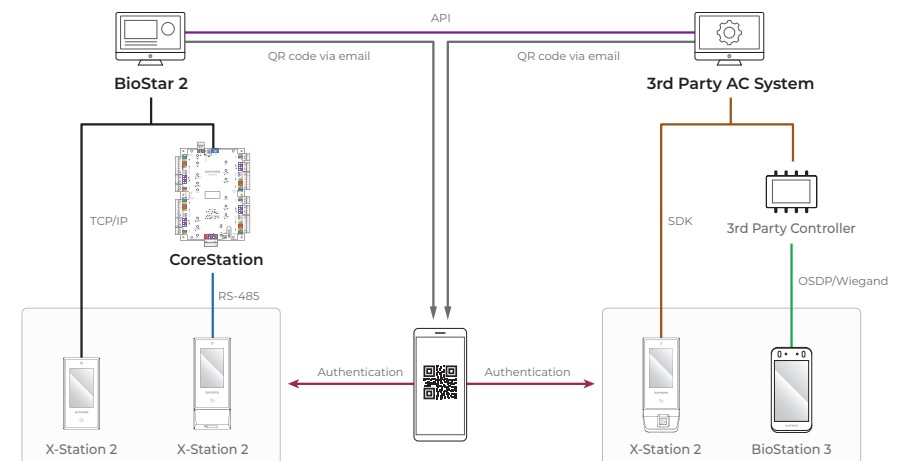
Suprema Airfob Patch

Suprema Airfob Patch can be attached to existing RF card readers to translate Mobile Access Card's Bluetooth or NFC signals to RF card signal, making them compatible with credentials stored in mobile devices. Airfob Patch works without battery, harvesting energy from RF signals transmitted from the card reader.



QR Code

Suprema offers the option of using QR codes as credential. Suprema's BioStation 3 and X-Station 2 can read QR codes composed of up to 32 ASCII codes. QR codes can be issued on BioStar 2 or 3rd party systems.



RFID Reader

Suprema offers card readers that support dual-frequency RFID technology, compatible with a wide range of card types including MIFARE, DESFire, FeliCa and EM. Suprema card readers can also read mobile credentials using both NFC and BLE communication. Suprema X-Station 2 is equipped with color LCD touchscreen and QR code recognition and can be used to manage time and attendance as well as visitor passage and access control at unmanned facilities.



X-Station 2 | Versatile Intelligent Terminal

- Compatible with most RFID cards, Mobile Access cards, QR codes
- Enhanced security with Secure Boot and OSDP (Open Supervised Device Protocol)
- Built-in Camera for image logs



XPass 2 | Outdoor Compact RFID Device

- Compatible with most RFID cards and dual-frequency
- Mobile Access cards
- IP67 and IK08 Vandal-proof structure



XPass D2 | Outdoor Compact RFID Reader

- Compatible with most RFID cards and dual-frequency
- Mobile Access cards*
- IP67 and IK08 Vandal-proof structure
- SIA OSDP verified

* Suprema Mobile Access is supported on XPass D2 - V02A H/W versions only.

| Controller

Suprema controller provides the advantages of a biometric-enabled security over a centralized access control system.



CoreStation | Intelligent Biometric Controller

Designed to accommodate enterprise-level systems, Suprema CoreStation stores up to 500,000 users with an incredible fingerprint matching speed of up to 400,000 match per second. Its multi-port interface also supports nonbiometric access control system such as RFID card readers, door locks, alarms sensors and RTE. With its high-performance, biometric readiness and Ethernet communication, CoreStation lets users access the full features of the BioStar 2 platform. Suprema CoreStation can be used in conjunction with door modules and output extension modules to control up to 132 access points. Suprema modules provides secure connection with encrypted communication.



Input Module (IM-120)

- 12 supervised inputs
- Offline operation
- Auxiliary & tamper input



Output Module (OM-120)

- Up to 12 output relays
- Elevator control with BioStar 2
- Anti-passback, fire alarm feature



Secure Module (SIO2)

- Secure door control
- Encrypted communication
- Compact form factor



Door Module (DM-20)

- Up to 4 doors
- Encrypted communication
- Two Wiegand interfaces



Contactless Solution

BioStation 3 sets a new standard in access control, providing a new door access experience that enables improved security across all doors, for organizations of all sizes. This terminal is smaller than previous model, yet it has the largest variety of features.

With highly advanced facial recognition, access credentials and usability features, BioStation 3 makes it easier than ever to safely, securely and conveniently protect an organization's physical security and users' personal data.

Multiple Contactless Access Methods

BioStation 3 provides multiple credential options — all contactless and perfectly compatible with a post-pandemic world.



- Facial Recognition
- QR and Barcode¹⁾
- Mobile Access
- Face Template on Mobile^{2), 3)}
- RFID Card

¹⁾ Available by the first half of 2023

²⁾ Available by the second half of 2023

³⁾ Suprema's exclusive authentication method 'Face Template on Mobile' lets users enroll into an access control system and store their face profile directly on their own mobile devices. This gives the users complete control over their own ID and their privacy. Users' biometric data is not stored in company databases.

Enhanced Facial Recognition and Security

BioStation 3's NPU-optimized AI algorithm offers the highest standards in facial recognition accuracy and speed.



- Accurately and rapidly recognize moving faces in high-traffic areas
- Use dynamic face templates to increase matching performance with faces wearing masks, glasses, hats, beards, different hairstyles, etc.
- Detect fake faces, images, and photos

System Topology

Depending on customer needs, Suprema access control devices can be set up in a distributed or centralized system.





Distributed System

In distributed systems, IP terminals and readers perform the roles of a controller and reader simultaneously, letting you undertake functions such as user management, access control management, and biometric recognition on a single terminal. Suprema's IP terminals and readers improve system reliability with easy system configuration and distributed management. It also provides the benefits of simple wiring, low installation and maintenance costs.



Biometrics-
Based System



Easy
Installation



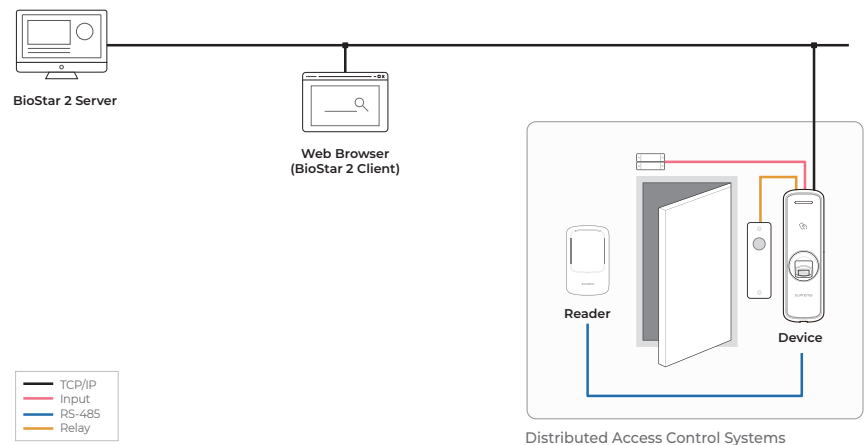
Outstanding
Scalability



Various Biometrics
Devices available

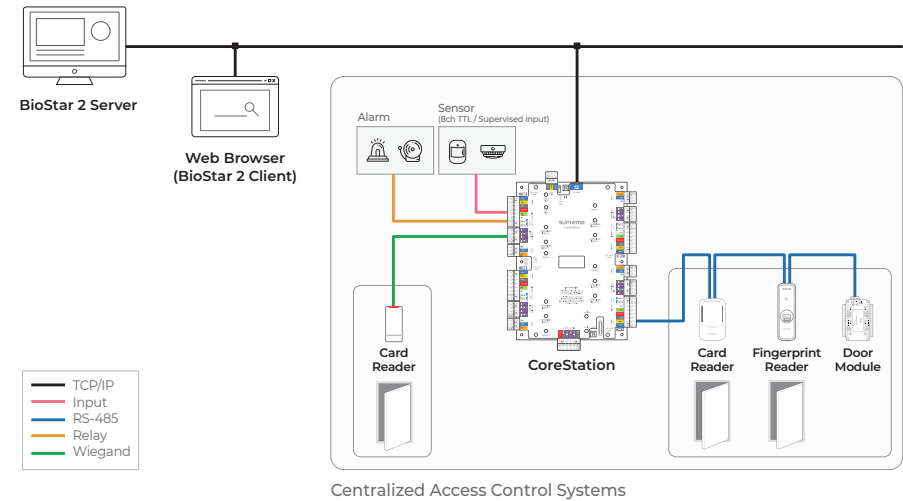


Low Installation and
Maintenance Costs



Centralized System

With Suprema's CoreStation and readers, you can build a centralized system, which is a system based on access control units (ACU). Suprema's centralized system provides enhanced security and excellent system scalability. The centralized system also enables you to upgrade your existing systems at lower installation cost. Integrated with BioStar 2, this system safely stores all information about each user including the user's name, ID, PIN, access rights and fingerprint data on a single device.





CoreStation 4 Door Access Control Kit | Complete Access Control Solution

CoreStation 4 Door Access Control Kit contains all components necessary to secure 4 doors. It includes BioStar 2 Access Control Software, CoreStation door controller, 4x access readers of your choice (RFID or Biometrics), and 50 free credits for Suprema Mobile Access. Easily set up a centralized access control system, choosing the credentials of your choice with options: Card, PIN, biometrics, and mobile access cards.



All-In-One Kit



Cost-Effective



Easy to Install

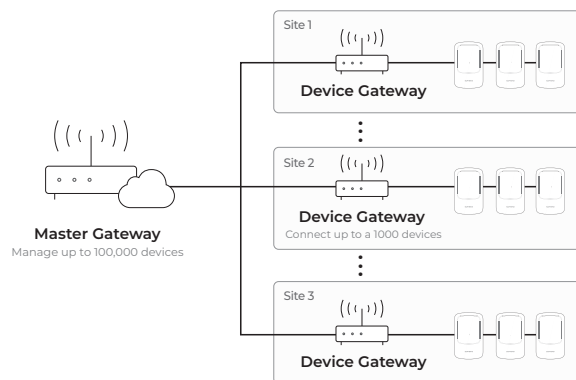




Development Tools

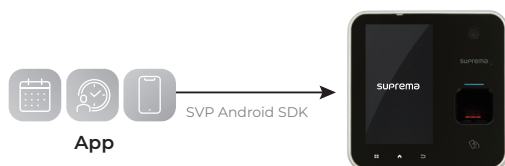
Suprema G-SDK

Suprema G-SDK is a highly-scalable development kit that enables device management for multi-site, multi-tenant customers. It is mobile and cloud-friendly, allowing you to easily add and manage devices via Device Gateways when a new site is added. Based on gRPC, Suprema G-SDK supports many programming languages including Java, C#, Python, Node.js, Go, and C++.



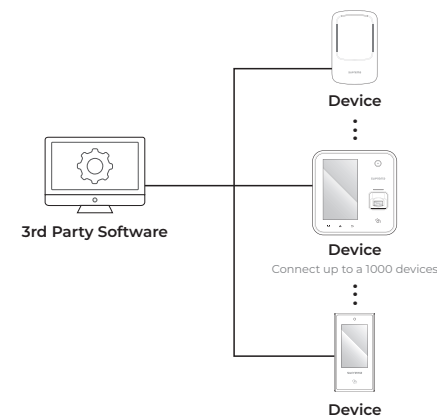
Suprema Versatile Platform (SVP) Android SDK

The Suprema Versatile Platform(SVP) Android SDK allows you to create customized apps to run on Suprema's time & attendance and workforce management terminals, OMNIS. The SDK is made up of APIs that let you develop Android applications for utilizing OMNIS' full functionality.



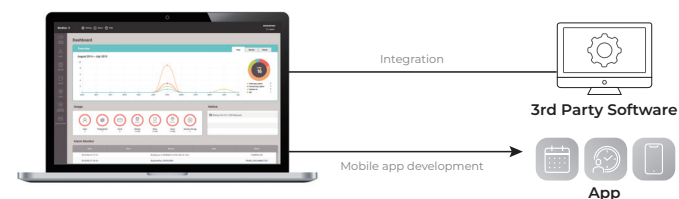
BioStar 2 Device SDK

BioStar 2 Device SDK is a development tool that enables you to control the core features of Suprema's terminal through 3rd party software.



BioStar 2 API

BioStar 2 API is a Web API that enables integration between BioStar 2 and 3rd party softwares. BioStar 2 API are standardized and allows communication using REST and JSON, making integration and app development easy.







Product Data sheet


Product							
Product Name		FaceStation F2	BioStation 3	FaceStation 2	FaceLite	BioStation A2	BioStation 2
General	Biometrics	FSF2-DB, AB: Face / FSF2-ODB: Face, Fingerprint	Face	Face	Face	Fingerprint	Fingerprint
	LFD (Live Finger Detection)	FSF2-DB, AB: - / FSF2-ODB: Supported (SW-based)	-	-	-	Supported	-
	Protection Class	IP65	IP65, IK06	-	-	-	IP65
	RF Options	FSF2-DB: 125kHz EM & 13.56MHz MIFARE, MIFARE Plus, DESFire, DESFire EV1/EV2/EV3 ⁽³⁾ , FeliCa FSF2-AB: 125kHz EM, HID Prox & 13.56MHz MIFARE, MIFARE Plus, DESFire, DESFire EV1/EV2/EV3 ⁽³⁾ , FeliCa, iCLASS SE/SR/Seos FSF2-ODB: 125kHz EM & 13.56MHz MIFARE, MIFARE Plus, DESFire, DESFire EV1/EV2/EV3 ⁽³⁾ , FeliCa	BS3-DB: 125kHz EM & 13.56MHz MIFARE, MIFARE Plus, DESFire, DESFire EV1/EV2/EV3 ⁽³⁾ , FeliCa BS3-APWB: 125kHz EM, HID Prox & 13.56MHz MIFARE, MIFARE Plus, DESFire, DESFire EV1/EV2/EV3 ⁽³⁾ , FeliCa, iCLASS SE/SR/Seos	FS2-D: 125kHz EM & 13.56MHz MIFARE, MIFARE Plus, DESFire EV1/EV2 ⁽²⁾ , FeliCa FS2-AWB: 125kHz EM, MIFARE Plus, HID Prox & 13.56MHz MIFARE, DESFire EV1/EV2 ⁽²⁾ , FeliCa, iCLASS SE/SR/Seos	FL-DB: 125kHz EM & 13.56MHz MIFARE, MIFARE Plus, DESFire EV1/EV2 ⁽²⁾ , FeliCa	BSA2-OEPW: 125kHz EM BSA2-OHPW: 125kHz HID Prox BSA2-OIPW: 13.56MHz iCLASS SE/SR/Seos BSA2-OMPW: 13.56MHz MIFARE, MIFARE Plus, DESFire EV1/EV2 ⁽²⁾ , FeliCa	BS2-OEPW: 125kHz EM BS2-OHPW: 125kHz HID Prox BS2-OIPW: 13.56MHz iCLASS SE/SR/Seos BS2-OMPW: 13.56MHz MIFARE, MIFARE Plus, DESFire EV1/EV2 ⁽²⁾ , FeliCa
	Mobile	NFC, BLE	NFC, BLE	FS2-D: NFC FS2-AWB: NFC, BLE	NFC, BLE	BSA2-OMPW, BSA2-OIPW: NFC BSA2-OEPW, BSA2-OHPW: -	BS2-OMPW, BS2-OIPW: NFC BS2-OEPW, BS2-OHPW: -
Capacity	Max. User ⁽¹⁾	100,000	100,000	30,000	30,000	500,000	500,000
	Max. Credential (1:N)	Face: 50,000 Fingerprint: 100,000	Face: 50,000	Face: 4,000	Face: 4,000	Fingerprint: 100,000	Fingerprint: 20,000
	Max. Credential (1:1)	Face: 100,000 Fingerprint: 100,000 Card: 100,000 PIN: 100,000	Face: 100,000 Card: 100,000 PIN: 100,000	Face: 30,000 Card: 30,000 PIN: 30,000	Face: 30,000 Card: 30,000 PIN: 30,000	Fingerprint: 500,000 Card: 500,000 PIN: 500,000	Fingerprint: 500,000 Card: 500,000 PIN: 500,000
	Max. Text Logs	5,000,000	5,000,000	5,000,000	5,000,000	5,000,000	3,000,000
	Max. Image Logs	50,000	50,000	50,000	-	50,000	-
Interfaces	Wi-Fi	-	BS3-DB: - / BS3-APWB: 802.11 b/g/n 2.4 GHz	FS2-D: - / FS2-AWB: Built-in, IEEE 802.11 b/g	-	Built-in, IEEE 802.11 b/g	Built-in, IEEE 802.11 b/g
	Ethernet	10/100 Mbps, auto MDI/MDI-X	10/100/1000 Mbps, auto MDI/MDI-X	10/100/1000 Mbps, auto MDI/MDI-X	10/100 Mbps, auto MDI/MDI-X	10/100 Mbps, auto MDI/MDI-X	10/100 Mbps, auto MDI-X
	RS-485	1ch Host or Slave (Selectable)	1ch Host or Slave (Selectable)	1ch Host or 1ch Slave	1ch Host or Slave (Selectable)	1ch Host or Slave (Selectable)	1ch Host or Slave (Selectable)
	Wiegand	1ch Input or Output (Selectable)	1ch Input and Output	1ch Input, 1ch Output	1ch Input or Output (Selectable)	1ch Input, 1ch Output	1ch Input, 1ch Output
	TTL Input	2ch Inputs	3ch Inputs	2ch Inputs	2ch Inputs	2ch Inputs	2ch Inputs, 2ch Outputs
	Relay	1 Relay	1 Relay	1 Relay	1 Relay	2 Relays	1 Relay
	USB	USB 2.0 (Host)	USB 2.0 (Host)	USB 2.0 (Host)	USB 2.0 (Host)	USB 2.0 (Host)	USB 2.0 (Host)
Hardware	CPU	1.8 GHz Dual Core + 1.4 GHz Quad Core	1.5 GHz Quad Core	1.4 GHz Quad Core	1.2 GHz Quad Core	1.0 GHz Quad Core	1.0 GHz Single Core
	Memory	16 GB Flash + 2 GB RAM	32 GB Flash + 4 GB RAM	8 GB Flash + 1 GB RAM	8 GB Flash + 1 GB RAM	8 GB Flash + 1 GB RAM	8 GB Flash + 256 MB RAM
	Crypto Chip	Supported	Supported	Supported	Supported	Supported	Supported
	Sound	16 bit	16 bit	24 bit Voice DSP (echo cancellation)	24 bit Voice DSP	24 bit/Voice DSP (echo cancellation)	16 bit
	Operating Temperature	-20°C ~ 50°C (-4°F ~ 122°F)	-20°C ~ 50°C (-4°F ~ 122°F)	-20°C ~ 50°C (-4°F ~ 122°F)	-20°C ~ 50°C (-4°F ~ 122°F)	-20°C ~ 50°C (-4°F ~ 122°F)	-20°C ~ 50°C (-4°F ~ 122°F)
	Tamper	Supported	Supported	Supported	Supported	Supported	Supported
	Power	DC 12V 2.1A, DC 24V 1A	DC 12V 2.5A, DC 24V 1.2A	DC 24V 1.2A	DC 24V 1.2A	DC 12V 1A	DC 12V 0.8A
	PoE	-	BS3-DB: - BS3-APWB: IEEE 802.3at compliant	-	-	IEEE 802.3af compliant	IEEE 802.3af compliant
	Dimensions (W x H x D mm)	FSF2-DB, AB: 119.8 x 233 x 23.5 FSF2-ODB: 119.8 x 268.3 x 49.6	82.5 x 171 x 23.4	141 x 164 x 125	80 x 170 x 76	155 x 155 x 40	142 x 145 x 45
	Certifications	CE, FCC, KC, RoHS, REACH, WEEE	CE, FCC, KC, UKCA, RCM (Compliance: RoHS, REACH, WEEE)	CE, FCC, KC, RoHS, REACH, WEEE, BT SIG	CE, FCC, KC, RoHS, REACH, WEEE, BT SIG	CE, FCC, KC, RoHS, REACH, WEEE	CE, FCC, KC, RoHS, REACH, WEEE

(1) The number of users registered without any credential data. (2) DESFire EV2 cards are supported by having backward compatibility of DESFire EV1 cards. CSN and smart card functions are compatible with Suprema devices. (3) DESFire EV2/EV3 cards are supported by having backward compatibility of DESFire EV1 cards. CSN and smart card functions are compatible with Suprema devices.

						
BioStation L2	BioLite N2	BioEntry W2 ⁽⁴⁾	BioEntry P2	X-Station 2	XPass 2	XPass S2
Fingerprint	Fingerprint	Fingerprint	Fingerprint	XS2-ODPB, XS2-OAPB: Fingerprint	-	-
Supported	Supported (SW-based)	Supported	-	XS2-ODPB, XS2-OAPB: Supported (SW-based)	-	-
-	IP65, IP67	IP67, IK09	-	IP65	IP65, IP67, IK08	IP65
BSL2-OE: 125kHz EM BSL2-OM: 13.56MHz MIFARE, MIFARE Plus, DESFire EV1/EV2 ²⁰ , FeliCa	BLN2-ODB: 125kHz EM & 13.56MHz MIFARE, MIFARE Plus, DESFire, DESFire EV1/EV2/EV3 ²⁰ , FeliCa BLN2-OAB: 125kHz EM, HID Prox & 13.56MHz MIFARE, MIFARE Plus, DESFire, DESFire EV1/EV2/EV3 ²⁰ , FeliCa, iCLASS SE/SR/Seos BLN2-PAB: 125kHz EM, HID Prox & 13.56MHz MIFARE, MIFARE Plus, DESFire, DESFire EV1/EV2/EV3 ²⁰ , FeliCa, iCLASS SE/SR/Seos	BEW2-OHPB: 125kHz EM, HID Prox & 13.56MHz MIFARE, MIFARE Plus, DESFire, DESFire EV1/EV2/EV3 ²⁰ , FeliCa BEW2-ODPB: 125kHz EM & 13.56MHz MIFARE, MIFARE Plus, DESFire, DESFire EV1/EV2/EV3 ²⁰ , FeliCa BEW2-OAPB: 125kHz EM, HID Prox & 13.56MHz MIFARE, MIFARE Plus, DESFire, DESFire EV1/EV2/EV3 ²⁰ , FeliCa, iCLASS SE/SR/Seos	BEP2-OD: 125kHz EM & 13.56MHz MIFARE, MIFARE Plus, DESFire EV1/EV2 ²⁰ , FeliCa BEP2-OA: MIFARE Plus, DESFire EV1/EV2 ²⁰ , 125kHz EM, HID Prox & 13.56MHz MIFARE, FeliCa, iCLASS SE/SR/Seos	XS2-ODPB, XS2-QDPB, XS2-DPB: 125 kHz EM & 13.65 MHz MIFARE, MIFARE Plus, DESFire EV1/EV2/EV3 ²⁰ , FeliCa XS2-OAPB, XS2-QAPB, XS2-APB: 125 kHz EM HID Prox & 13.65 MHz MIFARE, MIFARE Plus, DESFire EV1/EV2/EV3 ²⁰ , FeliCa, iCLASS SE/SR/Seos	125kHz EM & 13.56MHz MIFARE, MIFARE Plus, DESFire, DESFire EV1/EV2/EV3 ²⁰ , FeliCa	13.56MHz MIFARE, MIFARE Plus, DESFire EV1/EV2 ²⁰ (CSN), FeliCa
BSL2-OM: NFC BSL2-OE: -	NFC, BLE	NFC, BLE	NFC	NFC, BLE	NFC, BLE	Not Supported
500,000	10,000	500,000	10,000	500,000	200,000	50,000
Fingerprint: 100,000	Fingerprint: 10,000	Fingerprint: 100,000	Fingerprint: 10,000	Fingerprint: 100,000 (XS2-ODPB, XS2-OAPB only)	-	-
Fingerprint: 500,000 Card: 500,000 PIN: 500,000	Fingerprint: 10,000 Card: 10,000 PIN: 10,000	Fingerprint: 500,000 Card: 500,000	Fingerprint: 10,000 Card: 10,000	Fingerprint: 500,000 (XS2-ODPB, XS2-OAPB only) Card: 500,000 PIN: 500,000	Card: 200,000 PIN: 200,000	Card: 50,000
1,000,000	1,000,000	1,000,000	1,000,000	5,000,000	1,000,000	100,000
-	-	-	-	50,000	-	-
-	-	-	-	-	-	-
10/100 Mbps, auto MDI/MDI-X	10/100 Mbps, auto MDI/MDI-X	10/100 Mbps, auto MDI/MDI-X	10/100 Mbps, auto MDI/MDI-X	10/100 Mbps, auto MDI/MDI-X	10/100 Mbps, auto MDI/MDI-X	10/100 Mbps, auto MDI/MDI-X
1ch Host or Slave (Selectable)	1ch Host or Slave (Selectable)	1ch Host or Slave (Selectable)	1ch Host or Slave (Selectable)	1ch Host or Slave (Selectable)	1ch Host or Slave (Selectable)	1ch Host or Slave (Selectable)
1ch Input or Output (Selectable)	1 ch Input / Output (Selectable)	1ch Input or Output (Selectable)	1ch Input or Output (Selectable)	1ch In or 1ch Out (Selectable)	1ch In or 1ch Out (Selectable)	1ch In or 1ch Out (Selectable)
2ch Input	2ch Inputs	2ch Inputs	2ch Inputs	2ch Inputs	2 Inputs	2ch Inputs
1 Relay	1 Relay	1 Relay	1 Relay	1 Relay	1 Relay	1 Relay
-	-	-	-	USB 2.0 (Host)	-	-
1.2 GHz Quad Core	1.2 GHz	1.2 GHz Quad Core	1.0 GHz	1.5 GHz Quad Core	1.0 GHz	533 MHz DSP
2 GB Flash + 256 MB RAM	4 GB Flash + 64 MB RAM	2 GB Flash + 256 MB RAM	8 GB Flash + 64 MB RAM	16 GB Flash + 1 GB RAM	4 GB Flash + 64 MB RAM	16 MB Flash + 16 MB RAM
Supported	Supported	Supported	Supported	Supported	Supported	Supported
16-bit	16 bit	Multi-tone Buzzer	Multi-tone Buzzer	24 bit	Multi-tone Buzzer	Multi-tone Buzzer
-20°C ~ 50°C (-4°F ~ 122°F)	BLN2-ODB, BLN2-OAB: -20°C ~ 50°C (-4°F ~ 122°F) BLN2-PAB: -10°C ~ 50°C (14°F ~ 122°F)	-20°C ~ 50°C (-4°F ~ 122°F)	-20°C ~ 50°C (-4°F ~ 122°F)	-20°C ~ 50°C (-4°F ~ 122°F)	-35°C ~ 65°C (-31°F ~ 149°F)	-35°C ~ 65°C (-31°F ~ 149°F)
Supported	Supported	Supported	Supported	Supported	Supported	Supported
DC 12V 0.5A	DC 12V 0.4A	DC 12V 0.5A	DC 12V 0.2A	DC 12V 0.8A, DC 24V 0.5A	DC 12V 0.5A, DC 24V 0.3A	DC 12V 0.4A
-	-	IEEE 802.3af compliant	-	IEEE 802.3af compliant	IEEE 802.3af compliant	-
71 x 201 x 44	58 x 190 x 44	50 x 172 x 43.5	50 x 164 x 37.5	XS2-ODPB/XS2-OAPB: 82 x 208.5 x 25.9(53) XS2-QDPB/XS2-QAPB: 82 x 203 x 33.9 XS2-DPB/XS2-APB: 82 x 159 x 25.9	XP2-MDPB: 48 x 145 x 27 XP2-GDPB/GKDPB: 80 x 130 x 25	80 x 120 x 11.4
CE, FCC, KC, RoHS, REACH, WEEE	CE, FCC, KC, RoHS, REACH, WEEE	CE, FCC, KC, RoHS, REACH, WEEE, UL 294	CE, FCC, KC, RoHS, REACH, WEEE	CE, FCC, KC, RoHS, REACH, WEEE	CE, FCC, KC, RoHS, REACH, WEEE, SIG	CE, FCC, KC, RoHS, REACH, WEEE

⁽⁴⁾ Some models(BEW2-ODP, BEW2-OAP, BEW2-OHP) do not support BLE.



Product		
		
Product Name		CoreStation (CS40)
Capacity	Max. User	500,000
	Max. Credential (1:N)	Face: 100,000 Fingerprint: 100,000
	Max. Credential (1:1)	Face: 500,000 Fingerprint: 500,000 Card 500,000 PIN: 500,000
	Max. Text Logs	5,000,000
Interfaces	TCP/IP	Supported
	RS-485	5ch
	RS-485 Communication Protocol	OSDP V2 Compliant
	Wiegand	4ch
	Relay	4 Relay
	TTL Input	8ch (Supervised Input Selectable)
	TTL Output	8ch
Connectivity	AUX Input	2ch (AC Power Fail, Tamper)
Connectivity	Max. Slave Devices (RS-485)	Max. 64 devices (Max. 31 devices per port)
	Max. Wiegand Devices	Max. 132 devices (with DM-20)
Hardware	CPU	1.4 GHz Octa Core
	Memory	8 GB Flash + 1 GB RAM
	LED	Multi-color
	Operating Temperature	0°C ~ 50°C (32°F ~ 122°F)
	Tamper	Optional (ENCR-10)
	Power	DC 12V 3A
	Dimensions (W x H x D mm)	150 x 214 x 21
	Certifications	CE, FCC, KC, RoHS, REACH, WEEE, UL294

Product			
Product Name		BioEntry R2	XPass D2
General	Biometrics	Fingerprint	-
	Protection Class	-	IP65, IP67, IK08
	RF Options	BER2-OD: 125kHz EM & 13.56MHz MIFARE, MIFARE Plus, DESFire EV1/EV2 ⁽⁵⁾ , FeliCa	XPD2-MDB, XPD2-GDB, XPD2-GKDB: 125kHz EM & 13.56MHz MIFARE, MIFARE Plus, DESFire EV1/EV2 ⁽⁵⁾ , FeliCa, NFC & 2.4GHz BLE
	Mobile	BER2-OD: NFC	XPD2-MDB, XPD2-GDB, XPD2-GKDB: NFC, BLE
Interfaces	RS-485	1ch Slave	1ch Slave
	Wiegand	-	1ch Out
Hardware	CPU	1.0 GHz Quad Core	80 MHz
	Memory	32 MB Flash + 32 MB RAM	512 KB Flash + 160 KB RAM
	Sound	Multi-tone Buzzer	Multi-tone Buzzer
	Operating Temperature	-20°C ~ 50°C (-4°F ~ 122°F)	-35°C ~ 65°C (-31°F ~ 149°F)
	Tamper	Supported	Supported
	Power	DC 12V 0.2A	DC 12V 0.3A
	Dimensions (W x H x D mm)	50 x 164 x 37.5	XPD2-MDB: 48 x 144.7 x 27 XPD2-GDB/GKDB: 80 x 130 x 25
Certifications		CE, FCC, KC, RoHS, REACH, WEEE	CE, FCC, KC, RoHS, REACH, WEEE, SIG

Product					
Product Name		Input Module (IM-120)	Output Module (OM-120)	Door Module (DM-20)	Secure Module (Secure I/O 2)
Interfaces	RS-485	1ch	1ch	1ch	1ch
	Wiegand	-	-	2ch	-
	Relay	2 Relays	12 Relays	4 Relays	1 Relay
	Input	Supervised Input: 12ch (TTL Input Selectable)	-	TTL Input: 4ch Supervised Input: 4ch	2ch
	Output	-	-	6ch	-
Hardware	AUX Input	3ch (including 1 tamper switch)	2ch Dry Contact Input	-	-
	CPU	Cortex M3 72MHz	Cortex M3 72MHz	Cortex M3 72MHz	Cortex M3 72MHz
	Memory	512 KB Flash + 64 KB SRAM	128 KB Flash + 20 KB SRAM	128 KB Flash + 20 KB SRAM	128 KB Flash + 20 KB RAM
	LED	Multi-color	Multi-color	Multi-color	Multi-color
	Operating Temperature	-20°C ~ 60°C (-4°F ~ 140°F)	-20°C ~ 60°C (-4°F ~ 140°F)	-20°C ~ 60°C (-4°F ~ 140°F)	-20°C ~ 50°C (-4°F ~ 122°F)
	Power	DC 12V or DC 24V	DC 12V	DC 12V 0.5A	DC 12V 0.5A
	Dimensions (W x H x D mm)	90 x 190 x 21	90 x 190 x 21	130 x 90.5 x 35.8	36 x 65 x 18
	Certifications	CE, FCC, KC, RoHS, REACH, WEEE	CE, FCC, KC, RoHS, REACH, WEEE	CE, FCC, KC, RoHS, REACH, WEEE	CE, FCC, KC, RoHS

(5) DESFire EV2 cards are supported by having backward compatibility of DESFire EV1 cards. CSN and smart card functions are compatible with Suprema devices.

suprema
SECURITY & BIOMETRICS

Suprema Inc.

17F Parkview Tower, 248, Jeongjail-ro, Bundang-gu, Seongnam-si,
Gyeonggi-do, 13554, Republic of Korea

T +82 31 783 4502 www.supremainc.com



For more information, visit our website below by scanning the QR code.
<https://www.supremainc.com/en/about/contact-us.asp>

©2023 Suprema Inc. Suprema and identifying product names and numbers herein are registered trademarks of Suprema, Inc. All non-Suprema brands and product names are trademarks or registered trademarks of their respective companies. Product appearance, build status and/or specifications are subject to change without notice. [SUPREMA-AMB-LB-EN-REV4]

